

Media release

for immediate release 25 January 2012

Parallels Barbara Rogers

Barbara Rogers explores the diversity and language of the graphic stripe pattern through an installation of contemporary textiles in her solo exhibition *Parallels*.

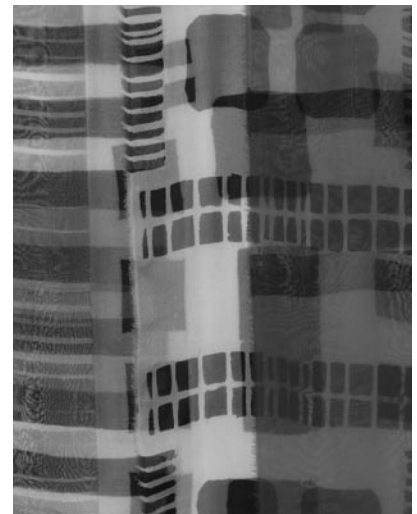
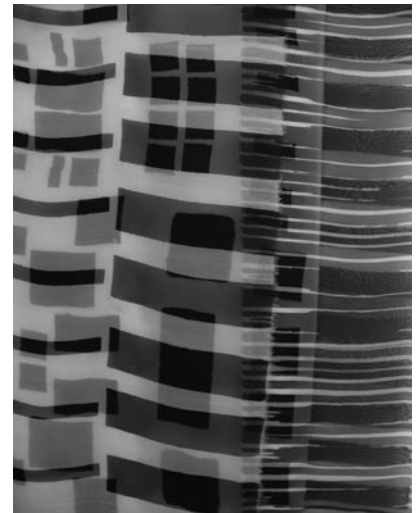
The stripe, although the simplest of all patterns, is a versatile communication tool. One which creates “maximum impact”, according to Rogers. Stripes are timeless, gender-neutral and have been used as social, political, cultural and religious signifiers throughout history. Stripes are the great deceivers – they figure in numerous optical illusions and are able to distort our perception of size, length, or curvature. They are used as a warning device for such things as pedestrian crossings, and to define exclusion zones. Pastoreau writes in *The Devil’s Cloth*, the stripe is not “a natural mark but a cultural mark, one that man stamps on his environment, inscribes on objects and imposes on other men”.

Rogers has been working with the traditional Japanese technique of shibori (meaning ‘to wring, or squeeze’) for more than 20 years – folding, stitching, tying and wrapping cloth before dyeing. By perfecting her own technique, her textiles momentarily divert one’s attention away from the tangibility and tactility of the cloth to contemplate features such as colour, light and shadow, and open and closed structures. The binary language of stripes is perfectly matched to the shibori technique – juxtaposing positive with negative, bound with unbound, dyed with plain, and historical with contemporary.

Although stripes are often described as being of one plane, Rogers’ masterful manipulation of cloth and dye explore the architectural possibilities of folding; of intersection and overlap; the analogies between pattern and language. In *Parallels*, Rogers uses her accumulated knowledge of numerous shibori techniques, together with experimental freedom, to push the possibilities towards their creative limits. She urges the viewer to see, through cloth, with new eyes by building layers of colour and emphasizing the strength behind the apparent fragility of sheer silk.

Testament to her knowledge and skills, Rogers has been selected to exhibit in the last five *International Shibori Symposia*; the highly acclaimed *ARTWEAR Fashion and Anti-fashion* exhibition at the Fine Arts Museum in San Francisco; and in numerous group exhibitions, both nationally and internationally.

Parallels will be officially opened by guest speaker **Julie Ryder, Textile designer, artist and educator** at 6.pm Thursday 9 February 2012. The exhibition continues until Saturday 24 March 2012 in the Centre’s Gallery, Level 1 North Building, 180 London Circuit, Canberra City. Craft ACT: Craft and Design Centre is open Tuesday to Friday 10.am to 5.pm and Saturday 12.pm to 4.pm (closed Sunday, Monday and public holidays).



Images (top to bottom): **Barbara Rogers, Striped** (detail of work in progress), 2011, silk organza, de-coloured, azoic dyes, various shibori techniques. Photograph: courtesy of the artist; **Barbara Rogers, Stripes** (detail), 2011, silk organza, de-coloured, azoic dyes, various shibori techniques. Photograph: courtesy of the artist.

Media Contact: Amy Kerr, Communications and Program Manager, (02) 6262 9333, amy.kerr@craftact.org.au

Parallels is a registered event in the 2012 Canberra Festival, presented by the ACT Government and sponsored by ACTTAB www.canberrafestival.com.au

Supported by:



ACT
Government



Craft ACT: Craft and Design Centre is supported by the ACT Government; and by the Australian Government through the Australia Council, its principal arts funding body, and by the Visual Arts and Craft Strategy, an initiative of the Australian, State and Territory Governments.